

Always the right attic stairs!



Thermal Protection WS3D
Insulation Sealing Connection system wellhöfer

Thermal Protection WS4D
Double insulation Sealing Connection system wellhöfer

FS Fire Protection
30 or 90 minutes From top and bottom Connection system wellhöfer

GUARDRAIL
TESTED STABILITY 500N wellhöfer

FLAT ROOF EXIT
wellhöfer

CUSTOM MADE
Always the fitting size wellhöfer

CLIMATE Class 3
according to EN 122 01:2016-16
Passive House Certified wellhöfer

HEALTHY HOUSING
with low-emission LOW-EMISSION according to DIN EN 122 01:2016-16 wellhöfer

StahlBlau

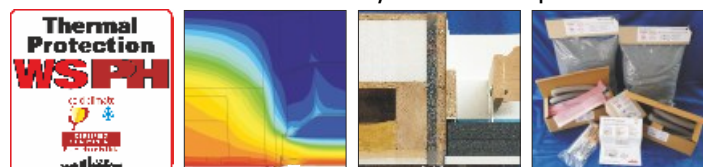
LiliPut

GutHolz

Image shows additional features thermal protection WS4D and handrail

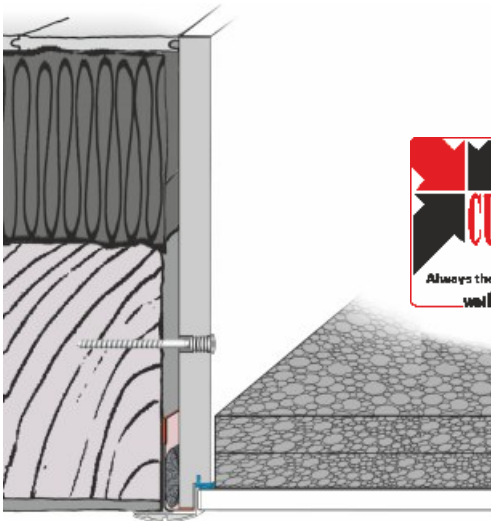
- **GutHolz - always the right choice.** Tried-and-tested 3-section attic stairs manufactured from wood, stringers with 9 cm deep steps joined using classic dove-tail joints.
- **StahlBlau - when something special is required.** 3-section attic stairs manufactured from steel, powder-coated, 11 cm deep steps.
- **Liliput - for small ceiling openings.** Concertina loft ladder manufactured from aluminium, ideal for renovations, 11 cm deep steps.

Our best solution for energy conservation: Attic stairs with thermal protection WSPH. Passive house certified and already within the requirements of 2020.



Attic stairs - What is important?

1 Fitting size.



Is the ceiling opening more than 2 cm longer/wider than a standard size, then a custom-made solution is a must! This saves expensive adjustments.

Custom made - everything fits perfectly:

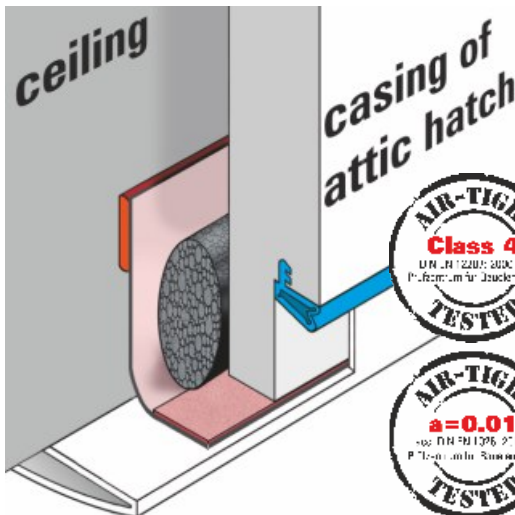
- Adjustment screws
- Cover profiles
- Ceiling connection

Construction dimensions in centimetres	Standard sizes			Custom-made solutions		
	StahlBlau	GutHolz	Liliput	StahlBlau	GutHolz	Liliput
Length	110, 120, 130, 140	90, 100		105-160	100-160	70-160
Width	60, 70			60-100	50-100	
Height	25			17-90		

Ceiling to floor height: StahlBlau 237-314; GutHolz 197-360; Liliput 190-360.
Note: Casing dimensions (length/width) are 1.5 cm smaller than the ceiling opening.

Don't forget ceiling thickness and ceiling to floor height - Order your attic stairs always with all 4 dimensions.

⚠ Please comply with the safety rules! Guardrail, handrail.



2 Tight, insulated, climate-tested.

The ceiling opening is a hole which is roughly 1 m² in size in the top storey ceiling. It must be insulated and permanently tight. Therefore, Wellhöfer thermal protection WS includes as standard:

- Component-tested U-values
- Verified air-tightness for attic stairs and connection system
- Tested climate-stability class 3

Component-tested safety in the terms of the EnEV (German Energy Saving Act) and blower-door-test.



Our best solution for energy conservation: Attic stairs with thermal protection WSPH - Passive house certified.

Furniture quality and safe and secure installation is provided by each and every Wellhöfer attic stairs: White hatch, attic hatch door with furniture edge, white and mitred cover profile, installation kit with all installation material.

We will be happy to advice you!



For technical details, also regarding further additional features such as fire protection and guardrail, please refer to the product description.

wellhöfer
TREPPEN AUS WÜRZBURG
www.wellhoefer.de