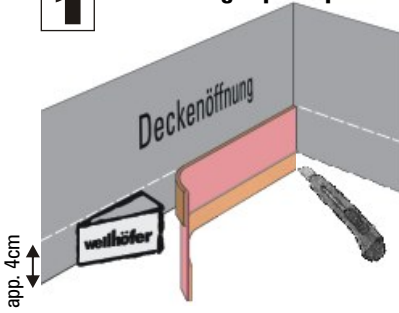


Installation Guide Sealing System



! Always apply sealing tape prior to installation of attic hatch!

1 Glue sealing tape in place:

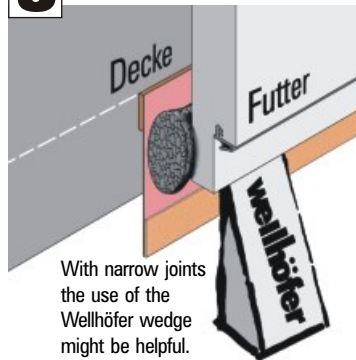


Cut off in corners and re-apply.

! Watch ceiling construction! (see below)

2 Install attic hatch (see Installation Guide Attic Hatch)

3 Push in insulation braid:



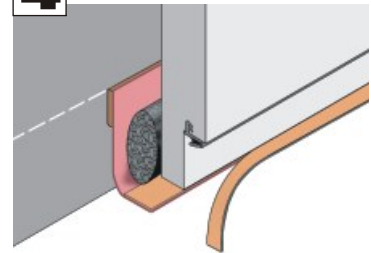
With narrow joints the use of the Wellhöfer wedge might be helpful.

Cut off in corners and re-apply. For close connection upset joints in the corners.



For attic stairs with fire protection: Push in non-flammable fire protection braid instead of insulating braid! (see Installation Guide Attic Hatch)

4 Closing of gap:



If required, cut projecting tape flush with joint angles.

Glue sealing tape to lining bar all over.

5 Install architraves (see Installation Guide Architraves)

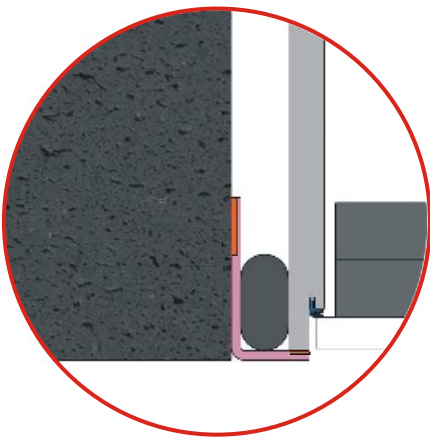
Full effect is gained only if the sealing system has been implemented as described above.

wellhöfer
TREPPEN AUS WÜRZBURG

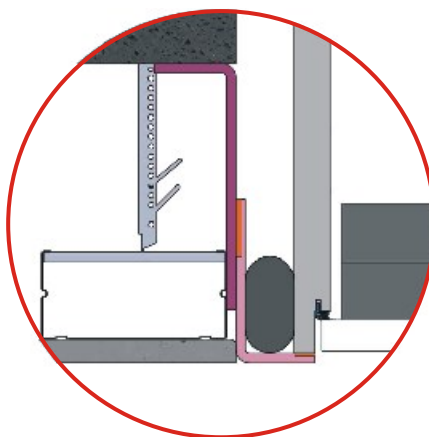
Airtight connection with various ceiling constructions:

! Glue Wellhöfer sealing tape tightly and securely onto the on-site airtight barrier!
! Watch ceiling construction and where necessary fill additional insulation into gap on-site.

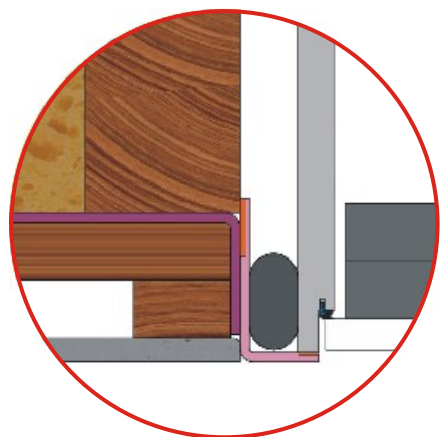
Solid Ceiling



Suspended Ceiling



Joist Ceiling with counter battens



Wellhöfer WärmeSchutz with Sealing System:
Reliability for EnEV* and blower-door-test.
*(German Energy Conservation Regulation)



wellhöfer
TREPPEN AUS WÜRZBURG