

Access Hatch **Deckentüre** Installation Guide

⚠ Please pass on to user/owner!

User & Safety Instructions

For damage which was caused due to improper installation or improper use, no liability can be assumed.

Safety instructions to avoid the risk of injury:

Always operate with tension rod in ring eye!

Do not lean ladder on the hatch door!

Do not hold on to the hatch door!

Do not drop hatch door when detaching it!

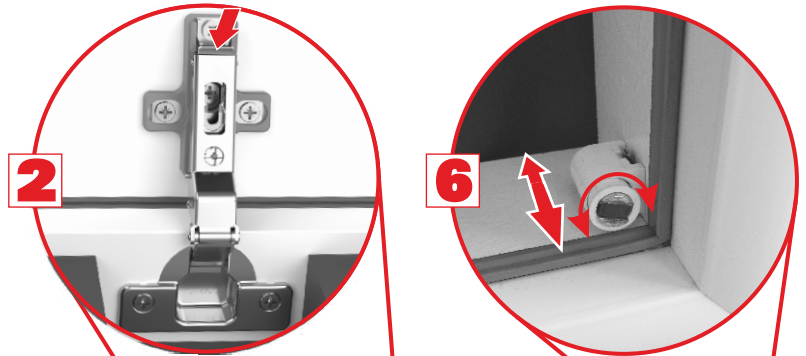


⚠ Before installing the access hatch:
Glue sealing tape into the ceiling opening
(see Installation Guide Connection System)

1 Screw ring eye flush into catch.



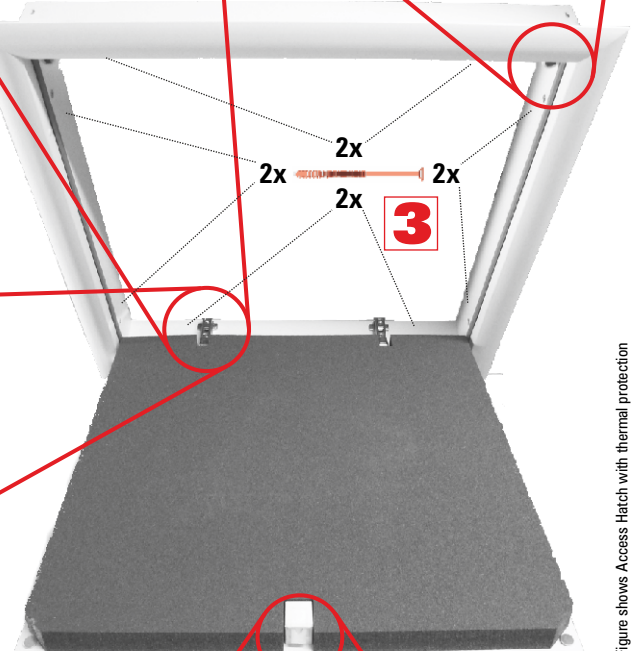
2 For easier installation:
Detach hatch door with concealed hinges.



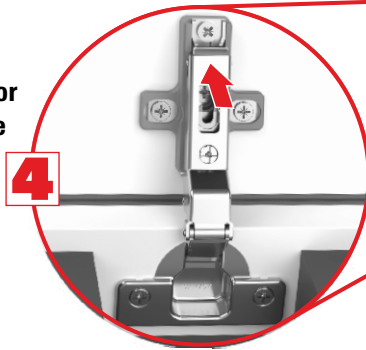
3 Place **frame** in ceiling opening and **adjust:**



- even out the surrounding gap (max. 2 cm)
- flush to ceiling and at right angles
(remeasure diagonals)
Underlay and **screw tight** (2x per side).



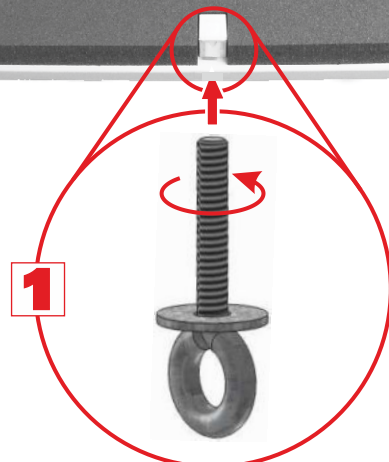
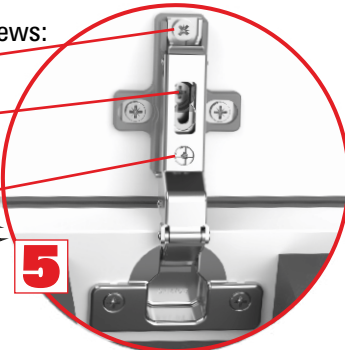
4 Click hatch door back into place



5 Align hatch door exactly
Adjustments with the appropriate screws:



depth ↑↓
width of gap left/right ↔
width of gap catch side / hinge side ↑↓



6 Adjust magnets for proper closing.



⚠ Push insulating braid into gap,
Glue sealing tape onto frame.
(see Installation Guide Connection System)

After completion of any other work on the ceiling:
7 Mount cover profiles:
Interlock. Test. Uncover adhesive tape. Press on firmly. Fix.
(Installation Guide Cover Profiles)

weilhöfer
TREPPEN AUS WÜRZBURG

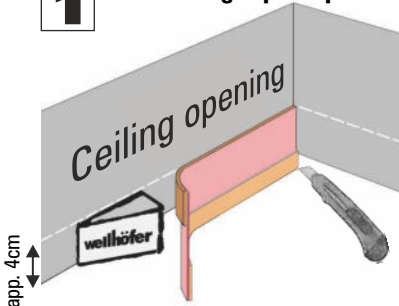
Figure shows Access Hatch with thermal protection

Installation Guide Connection System

! Always apply sealing tape to ceiling opening prior to installation of attic hatch!
Watch ceiling construction! (see below)

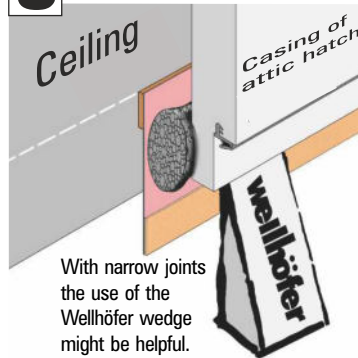


1 Glue sealing tape in place:



Cut off in corners and re-apply.

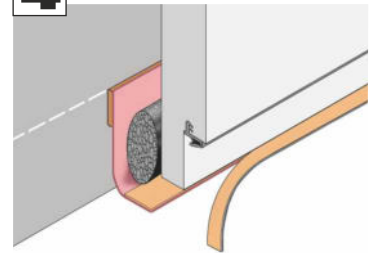
3 Push in insulation braid:



With narrow joints the use of the Wellhöfer wedge might be helpful.

Cut off in corners and re-apply. For close connection upset joints in the corners.

4 Close the gap:



If required, cut projecting tape flush with joint angles.

Glue sealing tape to lining bar all over.

2 Install attic hatch
 (Installation Guide Attic Stairs / Access Hatch)



For attic stairs with fire protection FS:
 Push in hardly flammable fire protection braid instead of insulating braid!
 (Installation Guide Attic Stairs FS)

5 Install cover profiles
 (Installation Guide Cover Profiles)

Full effect is gained only if the ceiling connection system has been implemented as described above.

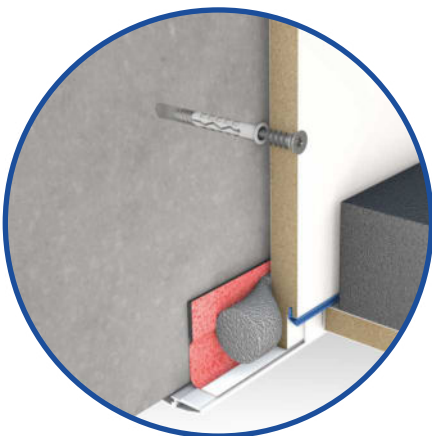


Correct air-tight connection:

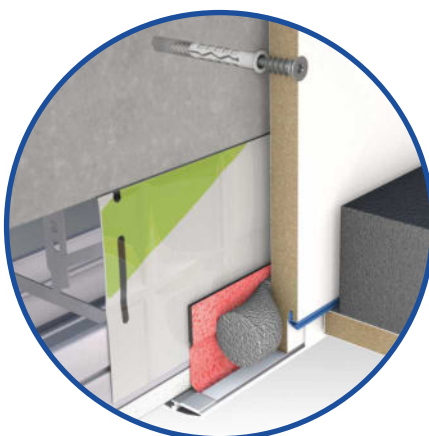
! Glue **Wellhöfer sealing tape** tightly and securely onto the **on-site air-tight barrier!**
Watch ceiling construction / thermal bridges / fire protection regulations and where necessary fill additional insulation into gap on-site.



Concrete ceiling



Suspended ceiling



Wodden beam ceiling with counter battens

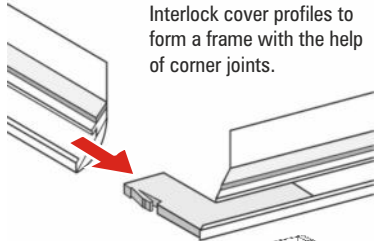


Installation Guide cover profiles

Unpack and mount cover profiles only after completion of any other work on the ceiling!

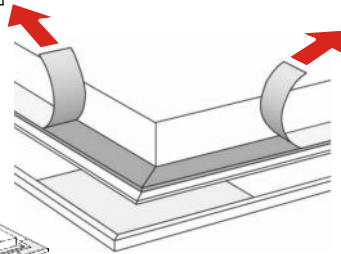
1 Interlock frame:

Interlock cover profiles to form a frame with the help of corner joints.



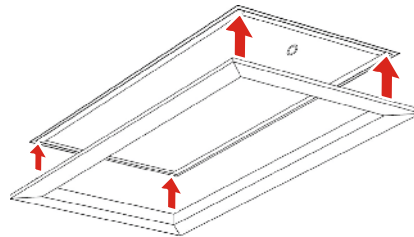
2 Attach frame by way of trial.

3 Uncover adhesive tape:



4 Mount cover profiles:

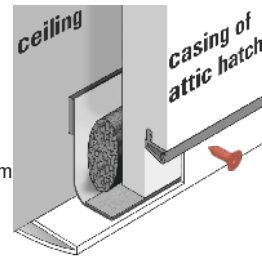
Keep attic hatch closed and press frame from below onto clean lining bar and press firmly.



5 Secure cover profiles

Screw in enclosed screws flush with bit:

- opening side 1x
- both longitudinal sides 2x
- distance to bottom edge 1.5 cm
- distance to corner 20 cm



6 Remove protective foil from cover profiles bottom.

