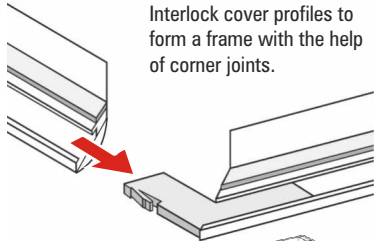


Installation Guide cover profiles

Unpack and mount cover profiles only after completion of any other work on the ceiling!

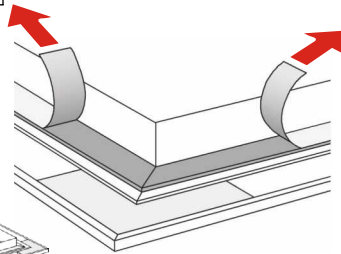
1 Interlock frame:

Interlock cover profiles to form a frame with the help of corner joints.



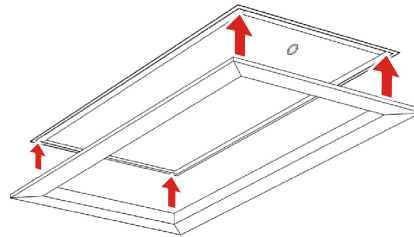
2 Attach frame by way of trial.

3 Uncover adhesive tape:



4 Mount cover profiles:

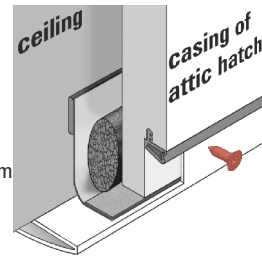
Keep attic hatch closed and press frame from below onto clean lining bar and press firmly.



5 Secure cover profiles

Screw in enclosed screws flush with bit:

- opening side 1x
- both longitudinal sides 2x
- distance to bottom edge 1.5 cm
- distance to corner 20 cm



6 Remove protective foil from cover profiles bottom.



Installation Guide plastering profiles for ceiling-flush version

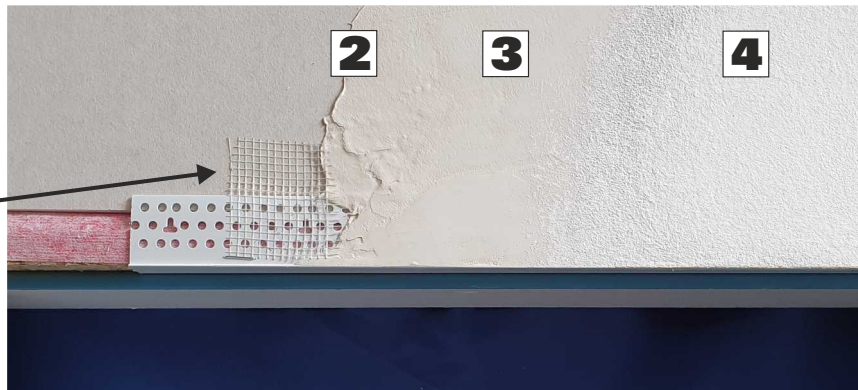
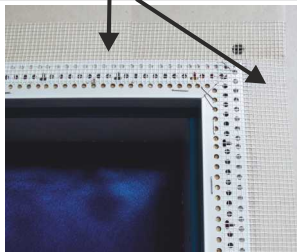
 **The hatch must be installed vibration-free!**

Tip for precise and clean installation: Detach the hatch door

- 1** **Setting and fixing plastering strips:**
Put the plastering stripes (on mitre) into the fold of the hatch frame. Fix them in place (use clips/tacker).



-  **Tip for professional execution:**
Attach fabric tape on site



2 Apply plaster

3 Grind

4 Paint

weilhöfer
TREPPEN AUS WÜRZBURG