

Installation Guide PH-Connection System

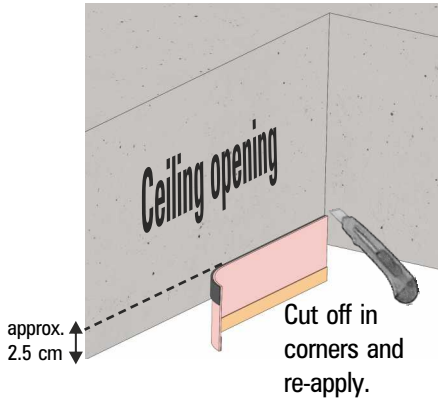


- Apply sealing tape prior to installation of attic hatch!
- Apply sealing tape to airtightness layer on site.

1 Certified design of the connection gap

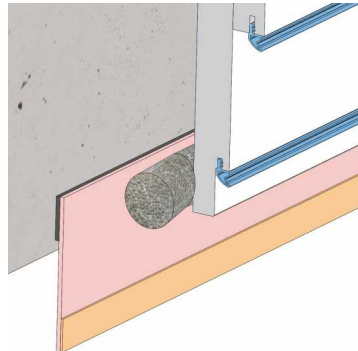


- 1 Glue sealing tape in place:**



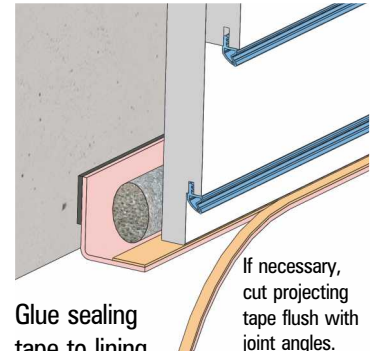
- 2 Install attic hatch**
(see Installation Guide Attic Hatch)

- 3 Push in insulation braid:**



Cut off in corners and re-apply. To achieve full effect, upset joints in the corners.

- 4 Close the gap:**



Glue sealing tape to lining bar all over.

- 5 Apply cover profiles:**
(see Installation Guide Cover Profiles)

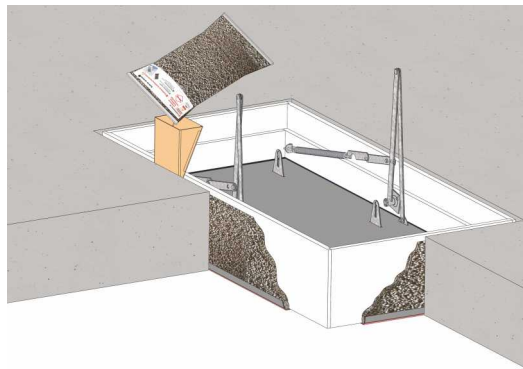


2 Certified design of the connection gap



- 1 Close installation boreholes:**
Apply cover caps to the inside of the attic hatch.

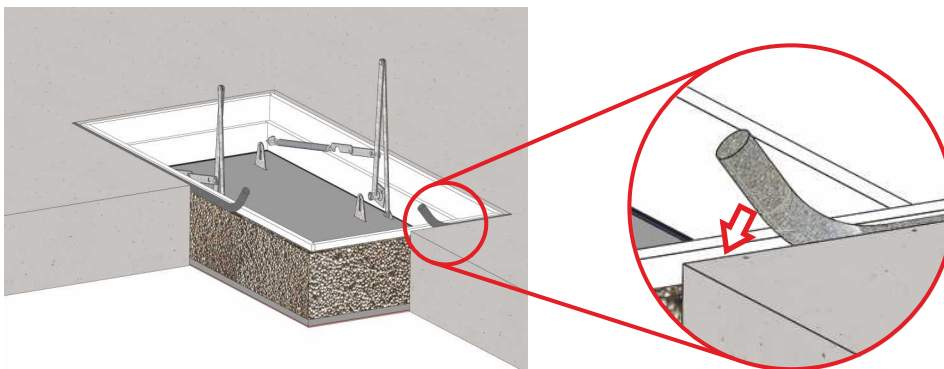
- 2 Insulate the gap completely**
Use funnel to gradually add the pour-in insulation right up to the top around the entire circumference.
(a gap of approx. 2 cm should be left on top)



3 Certified design of the connection gap



- 1 Close the top gap:**
Push in insulation braid flush around the entire circumference.



Only when the PH-Connection System is executed as described does it correspond to the passive house certification.