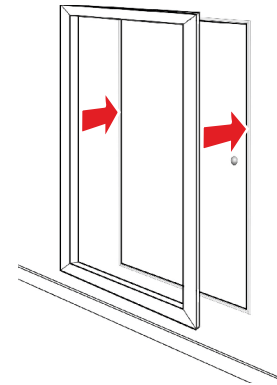
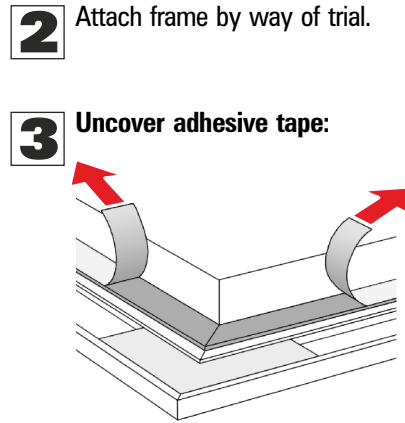
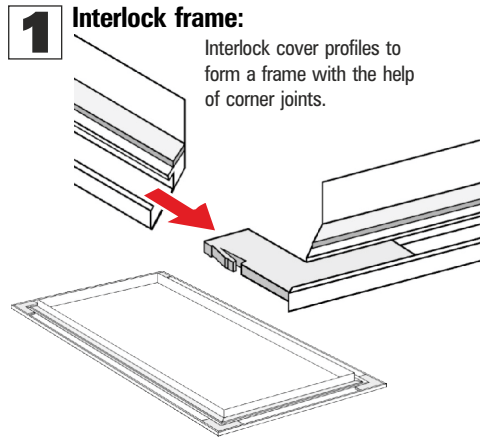


Installation Guide Cover Profiles

Unpack and mount cover profiles only after completion of any other work on the wall!

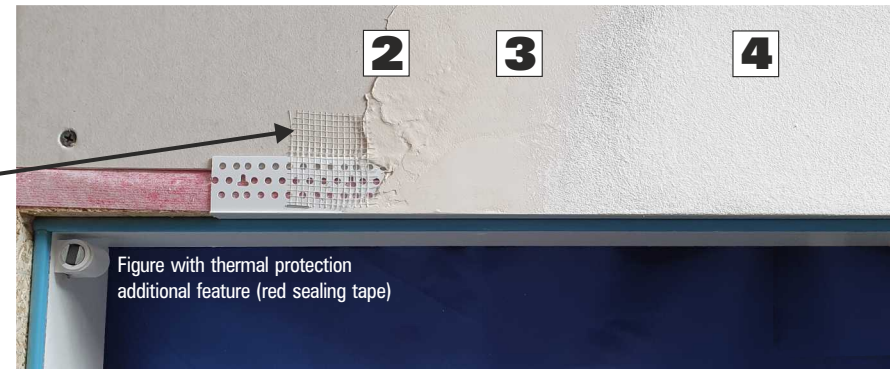
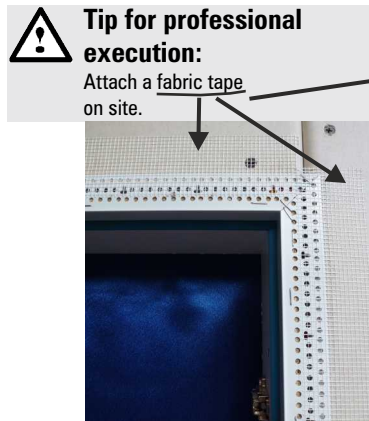


- 4 Mount cover profiles:**
 Keep wall hatch closed and press frame from front onto clean lining bar and press firmly.
- 5 Remove protective foil from cover profiles front.**

Installation Guide Plastering Profiles

for wall-flush type

- 1 Setting and fixing plastering strips:**
 Put the plastering strips (on mitre) into the fold of the wall hatch frame. Fix them in place (use clips/tacker).



- 2 Apply plaster.**
- 3 Grind.**
- 4 Paint.**