

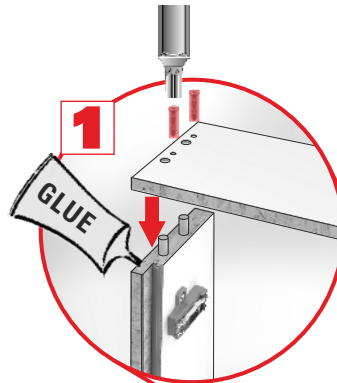
Installation and User Guide Please pass on to user/owner!




Before installing the wall hatch:
 Glue sealing tape into the wall opening
 (see Installation Guide Connection System)

Opening side according to order.
 3-sided wall hatch can not be rotated.

1 Glue and stick frame together;
 screw it in place:
 Put the frame onto the floor.

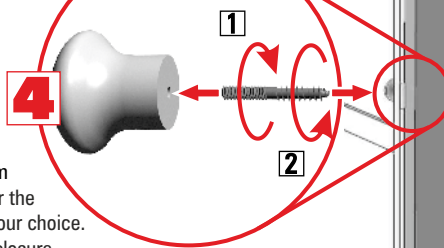


2 Place frame in wall opening and adjust
 - even out surrounding gap (max. 2 cm)
 - flush to wall and at right angles
 (remeasure diagonals)
 Underlay and screw tight

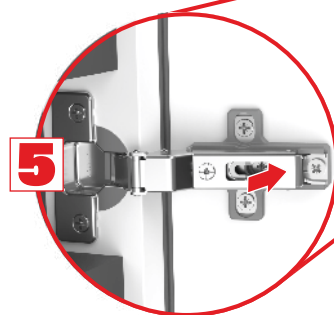
Thermal Protection WS3D WS4D
 Push insulating braid into gap,
 glue sealing tape onto frame.
 (see Installation Guide Connection System)

3 For wall-flush type:
 Mount plastering profiles
 (see Installation Guide Plastering Profiles)

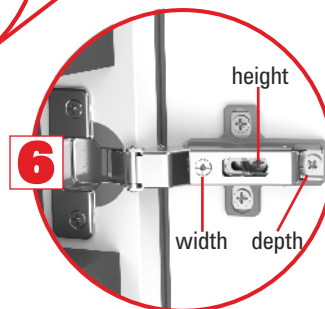
4 Mount knob at pre-drilled position
 For versions without borehole: Pre-drill $\varnothing 3$ mm at the desired position for the knob or set a handle of your choice. No knob with PushLock-closure.



5 Click door back in



6 Align door exactly
 Adjustments with the appropriate screws
 If required: Re-adjust (rotate) magnets at the frame



After completion of any other work on the wall:

7 Mount cover profiles (not needed with wall-flush type)
 Interlock. Test. Uncover adhesive tape. Press on firmly.
 (see Installation Guide Cover Profiles)

weilhöfer
 TREPPEN AUS WÜRZBURG

Figure shows 3-sided Wall Hatch with thermal protection